

Retirements

DECEMBER RETIREES

Thomas Akin 41 years of service	Kathryn Cooper 10 years of service	Georgia Hightower 32 years of service	John McEwan 20 years of service	Brian Ringgenberg 35 years of service
Garry Alexander 42 years of service	Steven David 31 years of service	James Keene 28 years of service	John Mitchell 45 years of service	Ralph Shields 34 years of service
Daniel Barraza 40 years of service	Mark De Weese 36 years of service	James Kipp 38 years of service	Robert Nagata 37 years of service	Jack Shoulders 26 years of service
Douglas Bell 40 years of service	Mitchell Dorsett 31 years of service	Jerry Little 41 years of service	James Nagel 35 years of service	Arlene Sid 30 years of service
Stephen Bennett 27 years of service	Robert Doss 38 years of service	Rachel Lopez 32 years of service	Gary Nevoli 41 years of service	Kevin Silva 35 years of service
Ernest Bonacum 35 years of service	Mark Endicott 40 years of service	Robert Lovett 42 years of service	Vinh Nguyen 5 years of service	Kevin Smith 28 years of service
Daryl Boyce 36 years of service	Gary Frey 34 years of service	Eugene Lowe 36 years of service	Anthony Orlando 33 years of service	David Sommerville 31 years of service
William Brockman 39 years of service	Richard Gerchow 10 years of service	Donna Maltbie 21 years of service	James Perry 43 years of service	Norman Sweeney 37 years of service
Vivien Cole 11 years of service	Bruce Harper 10 years of service	Michael Masatani 43 years of service	Irene Rice 20 years of service	Adrian Vieck 43 years of service
	Esteban Hernandez 42 years of service	Judith McArthur 38 years of service		Eugene Wiedl 41 years of service

Tributes

Roy W. Gaebel Jr. 9/16/2012; Ret. 2/1/1987 Gas and Electric Operations; Stockton	Tony A. Lemos 10/6/2012; Ret. 4/1/1988 Land; Drum	Donald Royce 10/8/2012; Ret. 8/1/2012 Maintenance and Construction
George W. Hearst 10/7/2012; Ret. 2/1/1992 Transmission; Redwood Region	Ralph L. Lindholm 9/4/2012; Ret. 3/1/1984 Electric Transmission and Distribution; San Joaquin	Diana Russell 10/2/2012; Ret. 10/1/2003 Regulatory Relations
Robert W. Hubbard 10/11/2012; Ret. 9/1/2003 Capital Investment; Area 1	John A. Marino 9/13/2012; Ret. 2/1/1987 Materials; General Office	Angelo Sasso 9/28/2012; Ret. 6/1/1985 Electric Transmission and Distribution; San Joaquin
James L. Hughes 10/16/2012; Ret. 3/16/1979 East Bay	Felipe Matthews 7/25/2012; Ret. 2/1/1994 Line; Distribution Construction	Alfred Schendel 10/8/2012; Ret. 4/1/1987 Steam Generation
Hideko D. Ishikawa 6/7/2012; Ret. 3/1/1987 Customer Service; Mission Trail	Robert G. Mills 10/29/2012; Ret. 4/1/1986 Gas Service; Mission Trail	James Sloan 10/12/2012; Ret. 1/1/1995 Hydro Generation
Kenneth R. Kershner 10/23/2012; Ret. 4/1/1994 Warehouse Operations; Materials and Fleet	Jesse J. O'Farrell 10/21/2012; Ret. 8/1/1971 Electric Transmission and Distribution; San Joaquin	George F. St. Louis 9/28/2012; Ret. 1/1/1995 General Construction
Kenneth C. Kram 10/1/2012; Ret. 12/1/1984 Marketing; Stockton	Robert Ramirez 9/28/2012; Active Gates Substation; Area 4	Douglas Taylor 10/16/2012; Ret. 5/1/2001 Steam Generation; Power Generation
Eugene F. Lee 10/11/2012; Ret. 9/1/2012 Law; General Office	Vincent Ramirez 10/18/2012; Ret. 1/1/1995 Customer Service; Stockton	Michael D. Thieme 9/27/2012; Ret. 6/1/1993 Government Relations; General Office



Retiree News

December 2012



PG&E riders: Nicolas Vighi, Lori Chen, Joel Sipe, Nash Zamzow.
(Photos courtesy of Jan Wexner)

Highlights:

- Riding to a Worthy Cause
- PG&E Comes to Aid of Those Affected by Hurricane Sandy
- Tributes and Retirements
- Retiree Club Activities

Riding to a Worthy Cause

By Maureen Bogues

They might have been tired and sore, but all of the PG&E Wexy Wheels cyclists and volunteers were smiling after they raised over \$11,000 as the top-earning team in the 4th annual Wheels for Meals Ride to support the Alameda County Meals on Wheels program.

The event, involving 1,000 riders and 200 volunteers, took place October 20 at Shadow Cliffs Regional Park in Pleasanton. Riders chose from a 15-, 35- or 70-mile course; some raised money, though fundraising was voluntary.

"It's a great family event," said Jan Wexner, associate distribution engineer with PG&E's Electric Estimating Department in Concord. She first participated as a rider three years ago with her husband and brother-in-law.

A year later, she formed PG&E's Wexy Wheels, incorporating a family nickname into the team name. Several of her relatives usually participate; this year, riders included Jan and two sisters and all of their husbands, plus her 10-year-old niece. Family members who came along just for support included her daughter, two more nieces, her brother and parents.

continued on inside

"You meet people from the company you would never meet otherwise, and everybody there is proud to represent PG&E."

Retiree Contacts

Alumni Advocates: 415-972-5803
PG&E Outage Hotline: 800-743-5002
PG&E Customer Service: 800-743-5000
PG&E Pension Payroll: 415-973-3767
Pacific Service Credit Union: 888-858-6878
Pacific Service Employees Association: 800-272-7732
PG&E Retirement Award Customer Service: 800-385-3139
San Joaquin Power Employees Credit Union:
800-637-5993
Email: alumniadvocates@pge.com
Web: <https://myportal.pge.com>

HR and Benefits questions:
phone: 800-700-0057
email: HRBenefitsQuestions@exchange.pge.com
mail: 1850 Gateway Blvd., 7th floor, Concord, CA 94520

Riding to a Worthy Cause

continued from front

The 85-member Wexy Wheels had about 50 riders and volunteers from PG&E; the rest were friends and family. Each year, more PG&Eers get involved. Two of Jan's PG&E teammates—Crystale Alessio-Medrano and Matt Masters—were among the event's top five fundraisers, bringing in about \$2,000 apiece, for which they were awarded PG&E bicycle jerseys. They also got Wheels for Meals jerseys from the ride.

Every year so far, PG&E has donated "in kind" use, as a rest area, the parking lot at the Tesla substation on Patterson Pass Road, and for each of the past two years, the company has donated \$1,000 through a Power Your Community Grant, plus a \$500 Community Service Award.

"It's good publicity for PG&E because people see employees in the blue PG&E shirts volunteering and raising money to feed seniors," Jan said.

The employees themselves enjoy getting exercise as they help others, plus they make new friends.

"You get a lot of camaraderie," Jan said. "Because you meet people from the company you would never meet otherwise, and everybody there is proud to represent PG&E."

PG&E Comes to Aid of Those Affected by Hurricane Sandy

By Russell Eisenman

On October 29, Hurricane Sandy made landfall in New Jersey and rocked the northern East Coast. Millions of people—from the Jersey Shore to as far west as Michigan, spread across 17 states—went days to weeks without power and over \$60 billion worth of damage was caused.

PG&E wanted to help and responded immediately. On October 30, more than 150 PG&E electric workers flew to New York to help restore power to the millions of people impacted by the devastating hurricane. It was believed to be PG&E's biggest effort ever to aid a fellow utility.

"Providing support to other utilities throughout the nation during major natural disasters is one of the hallmarks of PG&E and the electric utility industry," said Geisha Williams, executive vice president of Electric Operations.

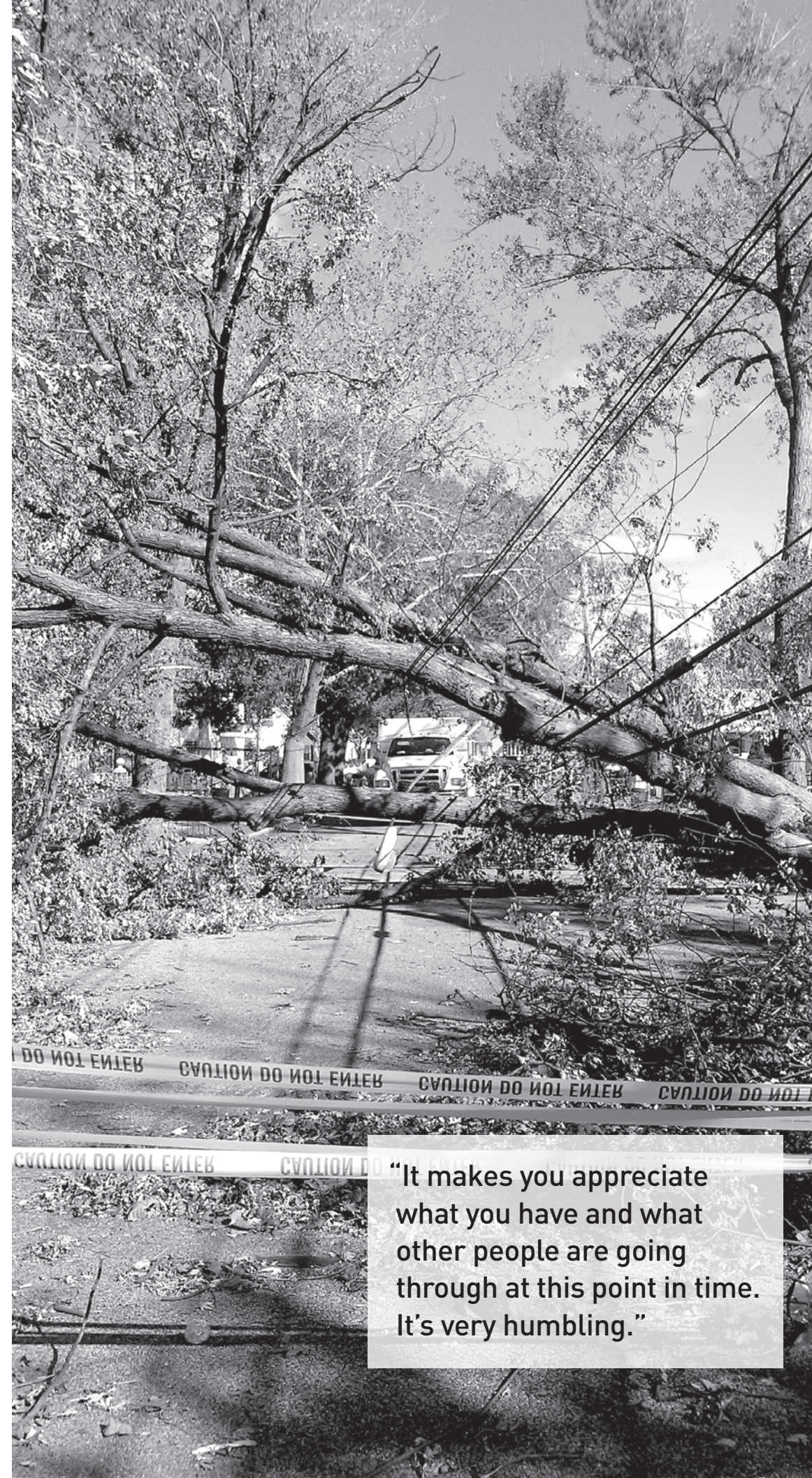
In addition, PG&E made a \$50,000 donation to the American Red Cross to support those in need after the massive storm swept across the Eastern Seaboard. PG&E employees, through the company's annual Campaign for the Community fundraising drive, were able to help out with contributions for Sandy relief. This year's campaign was extended an extra week, until November 7, to encourage employees to donate to those affected by the hurricane.

"It makes you appreciate what you have and what other people are going through at this point in time. It's very humbling," PG&E employee John Brogden said.

Along with trucks and supplies, PG&E set up a mobile command center to communicate with Con Edison in New York City to make sure everyone stayed on the same page. PG&E estimated it could take up to a month to restore power for millions affected by the massive outages. Their job in New York City will be done when they bring light to people in the dark.

"When you bring their power back on, there's a lot of pride in that," PG&E employee Jimmy Rogers said. "We all enjoy seeing their faces when they finally get their power back on."

PG&E has set up a virtual aid for Hurricane Sandy Relief efforts; an American Red Cross donation link is on the homepage of www.pge.com to provide shelter, food, emotional support and other assistance to those affected by the storm.



"It makes you appreciate what you have and what other people are going through at this point in time. It's very humbling."

Retiree Club Activities

December 4: San Francisco/Peninsula
Lunch: Elks Club, South San Francisco
Bob Hillman: 650-583-2799

December 4: Sacramento
Lunch: Dante Club, Sacramento
Arlene Cook: 916-988-8905

December 5: Coast Valleys
Lunch: Salinas Elks Lodge
Joanie Lozano: 831-663-4608

December 6: Fresno
Lunch: Pardini's Restaurant, Fresno
Ben Neumann: 559-442-1581

December 7: Kern
Lunch: Wool Growers Rest., Los Banos
Del Sands: 664-661-9151

December 7: North Valley/Shasta
Lunch: Win-River Casino, Redding
Don Mason: 530-527-1027

December 7: Yolo/Solano
Dinner: Winters Comm. Center, Winters
Bob Renoude: 707-448-5306

December 11: San Jose-DeAnza
Lunch: Three Flames, San Jose
Bob Jefferies: 408-225-2772

December 11: Sierra/Colgate
Lunch: Plaza Room, Yuba City
Jim Edwards: 530-671-0449

December 12: Los Padres
Lunch: Madonna Inn, San Luis Obispo
Gary Corsiglia: 805-544-0890

December 12: Sierra/Drum
Lunch: Alta Sierra Country Club
Lou Norton: 530-885-7631

December 14: North Bay
Lunch: Deer Park Villa, Fairfax
Patty Waller: 415-892-3408

December 14: Yosemite
Lunch: Winton VFW Post, Winton
Les Nickerson: 209-358-4912

December 19: Stockton
Lunch: UJ's Restaurant, Stockton
Roger Baldwin: 209-474-0128

December 20: North Valley South
Lunch: Masonic Lodge, Chico
Gary San Filippo: 530-873-4571